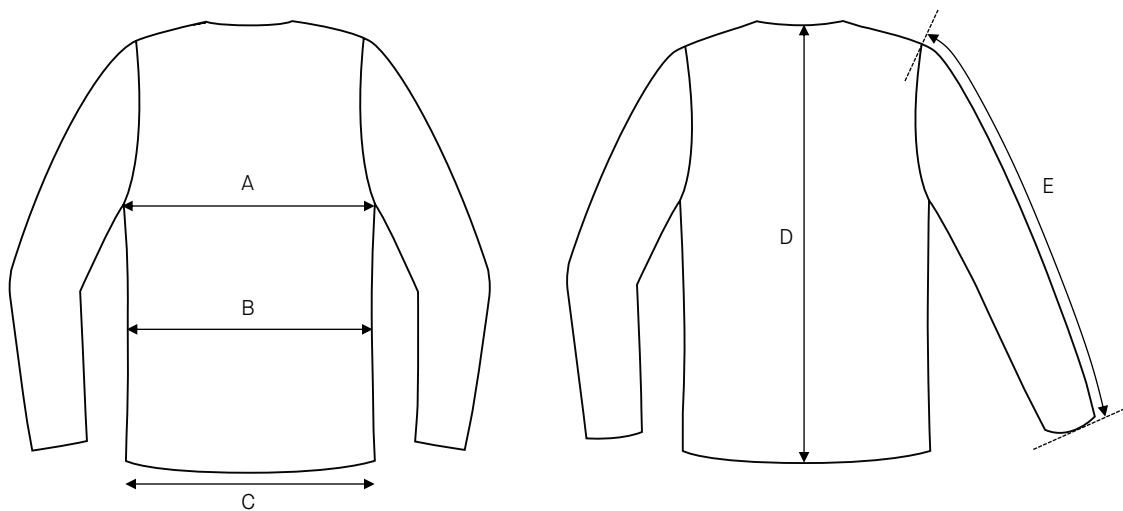


# Men’s jacket Adam / Slim fit / Woolmix Supreme

Art no: 5011100



	Normal size (cm)	44	46	48	50	52	54	56	58	60	62
A	Chest width	98	102	106	110	114	118	122	126	130	134
B	Waist width	88	92	96	100	104	109	114	120	126	132
C	Bottom width	100	104	108	112	116	120	124	128	132	136
D	Center back length	70	71	72	73	74	75	76	77	78	78,5
E	Sleeve length	62	63	64	65	66	67	68	69	69,5	70

	Long size (cm)	144	146	148	150	152	154	156	158	160	162
D	Center back length	73	74	75	76	77	78	79	80	81	81,5
E	Sleeve length	64,5	65,5	66,5	67,5	68,5	69,5	70,5	71,5	72	72,5

	Short size (cm)	88	92	96	100	104	108	112	114	120	124
D	Center back length	67	68	69	70	71	72	73	74	75	75,5
E	Sleeve length	59,5	60,5	61,5	62,5	63,5	64,5	65,5	66,5	67	67,5

## HOW TO MEASURE

To find the right size, compare a similar garment at home with our measurements. Measure flat across the item – never around.

**Chest width** / Measure across the chest between the lowest point of the arm seams. Multiply with 2.

**Waist width upper wear** / Measure the width at the garment's narrowest point. Multiply with 2.

**Waist width bottom wear** / Place the garment on a flat surface with the front up and measure from side to side. Multiply with 2.

**Bottom width** / Measure from side to side at the bottom of the garment. Multiply with 2.

**Center back length** / Measure the center back from the neck seam to the end of the garment.

**Sleeve length** / Lay the arm flat and measure from the shoulder point to where the cuff ends.

**Seat width** / Place the garment on a flat surface with the front up and measure from side to side at the garment's widest point. Multiply with 2.

**Thigh width** / Measure straight across the width of the leg. Multiply with 2.

**Inseam** / Measure the inside leg from the crotch to the bottom of the trousers.

**Foot width** / Measure from side to side at the bottom of the trousers. Multiply with 2.

**Length** / Measure from the highest point of the garment to the end of the garment.

**Collar length** / Open the shirt and lay the collar flat. Measure from the center of the button to the outer edge of the buttonhole.